

FRONT MOUNT PATROL WING

S T A N D A R D F E A T U R E S



NEW REAR HEEL CYLINDER DESIGN

STEWFM SHOWN

- Enclosed direct-lift toe cylinder keeps the cylinder out of road grime and eliminates binding on the slide mechanism
- Tapered Moldboard for more effective discharge.
- Standard deceleration feature for stowing moldboard
- Optional Cushioned hydraulic buffer

brace for lower stowing, allowing better visibility and the ability to angle the wing in and out while plowing.

- Optional side shift cylinder
- Floating mount at the toe and heel.
- Heavy duty 7" x 5" x 3/8" front cross tube
- Heavy duty construction using [8] 3/8" ribs, 10-gauge moldboard shell,

and heavy structural tubing at the mount

- Heavy duty, independent non-binding float mechanism keeps the toe of the moldboard on the ground, where you want it.
- Torsion trip cutting edge option uses [4] 7/8" diameter springs. Moldboard trip and rigid moldboard also available.

Making our roads safe and clear is Bonnell's primary goal. When the snow is falling fast, you need the equipment that will help you remove the maximum amount of snow in less time. The Bonnell Front Mount Patrol Wing is specifically designed to enhance snow removal effectiveness by expanding the total plowing width, thus minimizing the number of passes needed to clear the road. Now available in trip edge, moldboard trip, or non-trip, this versatile attachment will keep the truck on the road while moving the snow farther off the road.

The NEW Rear Heel Cylinder Design eliminates the need for special stowing procedure; reduces binding and wear on the front post; reduces the chance of the "moldboard fly-up" when hitting obstacles; and the decel function works in all moldboard positions.

The New Tilt Post Option eliminates the need for side shift cylinder; allows for closer mouting of the post to the grill; keeps wing toe closer (inboard) to truck when plowing, reducing snow dribble; and does not hinder the float function.

The Bonnell Toe Float floats independent of the toe cylinder, is free floating and non-binding design features heavy duty round tubing sliding on round bar. No pins and slots that hang up or bind.

Bonnell Industries

Front-Mount Patrol Wing Specifications

Trip Edge Model:	8TEWFM	9TEWFM	10TEWFM
Overall Length:	9'	10'	11'
Cutting Edge Length:	8'	9'	10'
Clearing Swath (Maximum)	5'-3"	5'-11"	6'-7"
Cutting Edge Size:	3/4" x 6"	3/4" x 6"	3/4" x 6"
Taper Height:	28" - 34"	28" - 35"	28" - 36"
Trip Assembly (All models):	[4] 7/8" Torsion Springs		
Trip Assembly Construction (All models):	5" x 3" x 1/2" angle		
Moldboard (All models):	10 Gauge Carbon Steel		
Trip Edge Angle Construction (All models):	5" x 3-1/2" x 1/2" with 1/2" gussets		
Heel Lift Cylinder (All models):	4" x 20" Stroke with 2" Nitrited Rod (Front or Rear Position)		
Toe Lift Cylinder (All models):	3" x 24" Stroke with 2" Chrome Rod		
Front Cross Tube (All models):	7" x 5" x 3/8" Wall Rectangular Tubing		
Rear Pushframe (All models):	6" x 4" x 3/8" Wall Rectangular Tubing		
Push Bar:	1 - Telescoping, Spring Buffered (Hydraulic Optional)		
Finish:	Omaha Orange		

Moldboard Trip Model:	8MTWFM	9MTWFM	10MTWFM
Overall Length:	9'	10'	11'
Cutting Edge Length:	8'	9'	10'
Clearing Swath (Maximum)	5'-3"	5'-11"	6'-7"
Cutting Edge Size:	3/4" x 6"	3/4" x 6"	3/4" x 6"
Taper Height:	28" - 34"	28" - 35"	28" - 36"
Trip Assembly (All models):	[1] 5" OD 2300 LB/IN Adjustable Compression Spring		
Moldboard (All models):	10 Gauge Carbon Steel		
Bottom Angle Construction (All models):	7" x 4" x 1/2" Boxed with 3/8" plates		
Heel Lift Cylinder (All models):	4" x 20" Stroke with 2" Nitrited Rod (Rear Position Only)		
Toe Lift Cylinder (All models):	3" x 24" Stroke with 2" Chrome Rod		
Front Cross Tube (All models):	7" x 5" x 3/8" Wall Rectangular Tubing		
Rear Pushframe (All models):	1/2" Plate Enclosure with 6" x 4" x 3/8" Cross Tubing		
Push Bar:	1 - Telescoping, Spring Buffered (Hydraulic Optional)		
Finish:	Omaha Orange		

Also available in a rear mounted position.



1385 Franklin Grove Rd. • Dixon, IL 61021 • www.bonnell.com
 (815) 284-3819 • (800) 851-9664 • Fax (815) 284-8815

Bonnell Industries reserves the right under its product improvement policy to change construction or design details and furnish equipment when so altered without reference to illustrations or specifications used herein.
 © 2006 Bonnell Industries, Inc.

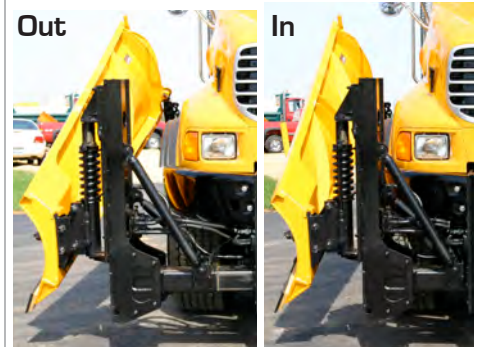


Options:

- **Front mounted heel cylinder:** provides parallel lifting of the moldboard to the road surface.

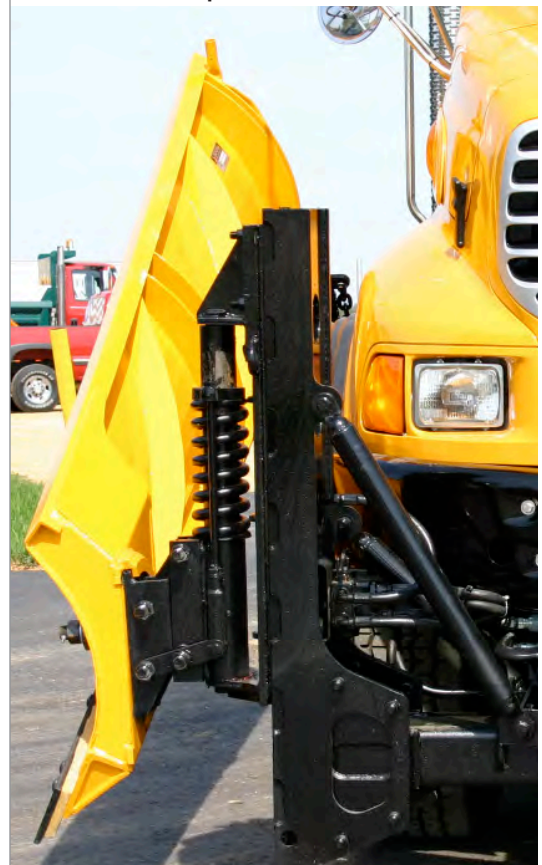


- **Hydraulic Buffer Brace Option** allows the moldboard to be stowed low for visibility



- **Hydraulic Side Shift Option** to assist with hood opening

- **Moldboard Trip**



815.284.3819