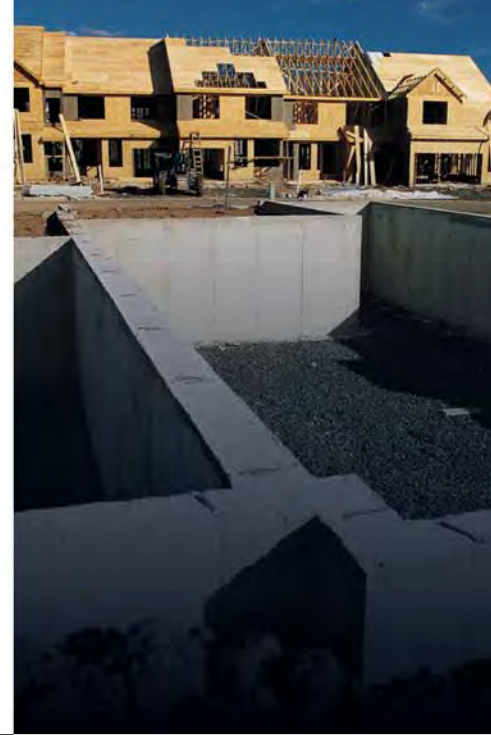


STAHL®

Crane Bodies
Heavy Duty Bodies



STAHL®

Get the Complete Crane and Body Package You Need!

STAHL® bodies provide maximum storage space for your equipment and the strength and durability your work requires. **STAHL®** brings you a field-proven package of performance and strength.

One Year Limited Warranty On Cranes • Five Year Limited Warranty On Crane Bodies



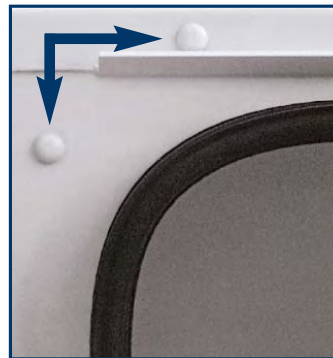
*Shown with optional crane, bumper and out-ridgers

PATENT PENDING

LOCK-BOLT CONSTRUCTION

A proven, mechanical fastening system that is **stronger** than welding, eliminates 80% of the body welding, and results in a more **corrosion resistant** body. It eliminates distortion caused by welding and allows for more **consistently manufactured** bodies.

1. **Stronger!** Testing shows that lock-bolt construction is 4 times stronger than welding. Lock-bolts provide 1,000 lbs. of clamping force per fastener.
2. **Rust Resistant!** Lock-bolt construction eliminates welding and grinding. Welding and grinding remove the protective galvanneal coating from steel and create areas prone to rust. Lock-bolt construction provides a body with unmatched corrosion resistance.
3. **Consistent!** Lock-bolts are fastened through holes that are punched by computer-operated equipment so you get more consistent, quality manufactured bodies every time.



5-year warranty

5-Year Warranty: STAHL® service bodies are built to withstand the demands of hardworking customers. **STAHL®** protects your investment with a 5-year limited warranty.

Made in USA

STAHL®

Standard Features



12 gauge galvanized steel treadplate on compartment tops, inside centers and bulkhead. Shown with optional spray-on bed liner.



The 14 gauge galvanized steel double panel tailgate with stainless steel latches provides a durable and corrosion resistant method of cargo containment.



Four (4) heavy duty 6000 # capacity tie down rings in load space provide an easy method to secure cargo.



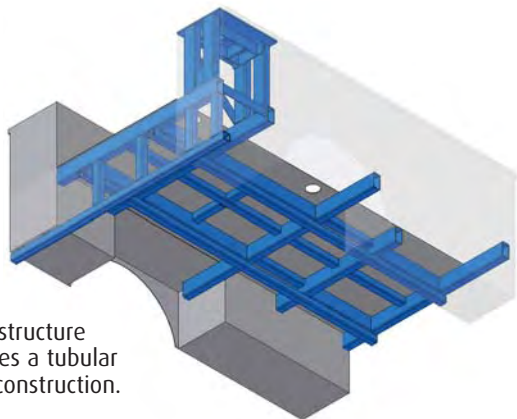
10 gauge galvanized steel one piece sides.



Crane reinforcement on curbside compartment provides a strong and durable base for cranes up to 8000# capacity. Standard for Crane Body and an option for Heavy-Duty Body.



Large Stainless Steel 3 pt. "D" ring door latches provide strength, durability, a tighter door seal, and ease of operation by utilizing roller type lock rods.



Understructure features a tubular steel construction.



Gas shock door holders and "Clip-On" high quality door seal.

Stainless Steel bolt-on hinges provide security, durability, corrosion protection, and low maintenance.

Optional Features



A 60" high vented tank compartment is optional on all bodies. Tank holders are easy to operate and provide a convenient method of tank containment



Optional work bench style bumper is 18" deep and features an integrated tool compartment with doors on each side.



Optional drawer packages provide easy access to small tools

Other Options

- Master Locking System
- Rope Rails
- Additional Shelving
- Slam Action Tailgates
- Tank Compartments
- Additional Tie Down Rings
- Transverse Compartment
- Additional Material Trays

Made in USA

STAHL®

A Scott Fetzer Company



Galvanneal steel construction

Features 1/4" lock bolt construction for reduced chance of corrosion

Keyed alike 3-point D-handles with rollers on doors ensure secure door closure

Doors feature 10 gauge single panel with 14 gauge hat section reinforcement, gas shock door holders and stainless steel surface mount hinges

One-piece 10 gauge sides for strength and rigidity

Rust-preventative undercoating

Recessed D-rings (6,000 lbs.) installed in the floor

Automotive bulb-type clip-on rubber door seal and flush-mounted doors for weathertight integrity

3/16" hot rolled treadplate floor

Rubber fenderette

*Shown with optional crane, bumper and out-riggers

The Full Line of Products from STAHL®



Challenger X Service Body



GCX Service Body



Grand Challenger



Challenger Dump Body



Crane & Heavy-Duty Body & STAHL® Crane



Tool Boxes



CoverAllX



STAHL®

For more information, please log onto www.stahl.cc

3201 West Old Lincoln Way

Wooster, OH 44691

(330) 264-7441

Customer Service

Cardington, OH 800-277-8245

Durant, OK 800-972-9980

Merced, CA 800-348-4335

info@stahl.cc

www.stahl.cc

Photographs may contain optional equipment. Specifications subject to change without notice.

Specifications

STANDARD CONSTRUCTION

- Bulkhead 12 gauge rigidized treadplate
- Compartment bottoms 10 gauge galvaneal
- Compartment tops 12 gauge rigidized treadplate
- Longsills 3" x 3"x 1/4" wall (no wheel housings)
- Crossmembers..... 3" x 6" tubing with 7 gauge wall front, intermediate and rear
- Crossmembers-support 3" x 3" tubing with 7 gauge wall (between longitudinals)
- Doors..... 10 gauge galvaneal with 12 gauge galvaneal hat section reinforcement
- End panels (front and rear). 10 gauge galvaneal
- Fenders 10 gauge galvaneal with rubber fenderettes
- Intermediate panels 10 gauge galvaneal
- Floor 3/16" treadplate steel
- Loadspace inside centers ... 12 gauge rigidized treadplate
- Rear Kickplate..... 12 gauge rigidized treadplate
- Crane reinforcement (4) vertical supports with gussets made of 3" x 5" tubing with 7 gauge wall
- Crane reinforcement top plate (4) vertical tube supports 3x5 gauge tube with 1/4x1/2 plate reinforcement
- Rear Frame reinforcement.. 3" x 6" tubing with 7 gauge wall reinforcement (full length) at top, 3" x 3" tubing with 7 gauge wall reinforcement (full length) at bottom, and (6) 3" x 3" tubing with 7 gauge wall reinforcements evenly spaced vertically
- Shelving 16 gauge high-spangle galvanized steel (250# capacity)
- Tailgate 14 gauge galvaneal (double panel, formed construction, 8" high)
- A-40 galvaneal steel construction. Two-sided zinc coated galvaneal steel (.40 oz of zinc coating per square foot of steel) provides maximum rust and corrosion resistance.
- Body construction is mechanically fastened and welded.



Shown with optional crane, bumper and manual outriggers.

STANDARD FEATURES / EQUIPMENT

- Lock-bolt construction provides unbeatable strength, eliminates rust-causing welding and grinding, and promotes corrosion-free, long-lasting product.
- Four “D” ring tie-downs installed in the load-space (6,000 # capacity each)
- “Clip-On” Automotive bulb-type door seals (factory installed).
- All shelving is adjustable to any height and is mounted on **strut channels** for superior strength
- **Lock cylinders** are keyed alike with single-bitted keys and have a weatherproof cover.
- **Primer** is a high-grade automotive type. Bodies are cleaned with a high-temperature, high-pressure chemical solution prior to prime painting.
- **Gas shock door holders**
- **Undercoating** on underside of floor and wheel wells.
- Stainless Steel blind mount 3 pt. “D” ring door latch with easy operation rollers on the slide rods
- **Stainless Steel “bolt-on” hinges** with stainless steel bolts and gaskets (3 per vertical compartment door)
- **One-piece 10 ga** sides for strength and rigidity.
- **STAHL** 's exclusive 5-year “No Rust, No Bust” warranty.

Continues on reverse side.

STANDARD COMPARTMENTATION

COMPARTMENT	BODY LENGTH	COMPT. WIDTH	CURBSIDE COMPARTMENTATION	STREETSIDE COMPARTMENTATION
Front vertical	108" 132"	32"	Two (2) adjustable material trays with adjustable dividers	Two (2) adjustable material trays with adjustable dividers
Second Front Vertical	132"	24"	Two (2) adjustable plain shelves	Two (2) adjustable plain shelves
Horizontal	108" 132"	50"	One (1) full width adjustable (bolt-in) material tray with adjustable dividers	Open
Rear vertical	108" 132"	26"	Two (2) adjustable material trays with adjustable dividers or 8,000# (48,000 ft. #) crane reinforcement	Two (2) adjustable material trays with adjustable dividers

DIMENSIONAL SPECIFICATIONS

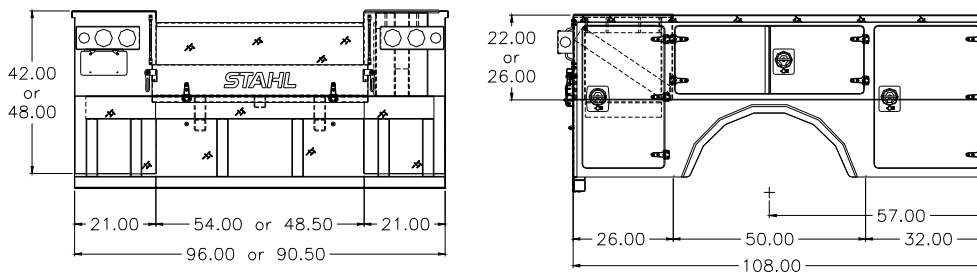
DESCRIPTION				
Body Length	108"	108"	132"	132"
Body Height*	42"	48"	42"	48"
Cab-to-axle	60"	60"	84"	84"
First Vertical Width	32"			
Clear door opening	25"			
Second Vertical Width	N/A	N/A	24"	24"
Clear door opening	N/A	N/A	19"	19"
Horizontal Width	50"			
Clear door opening	47"			
Rear Vertical Width	26"			
Clear door opening	19"			
Vertical Compartment Height	42"	48"	42"	48"
Clear door opening	34"	40"	34"	40"
Horizontal Compartment Height	21.75"	25.75"	21.75"	25.75"
Clear door opening	15"	19"	15"	19"
Compartment Depth	21"			
Compartment Depth (useable)	19"			
Floor-to-Compartment Top Height	22"	26"	22"	26"
Floor-to-Compartment Bottom	20"	22"	20"	22"
Tailgate Height	8"			

OPTIONAL EQUIPMENT

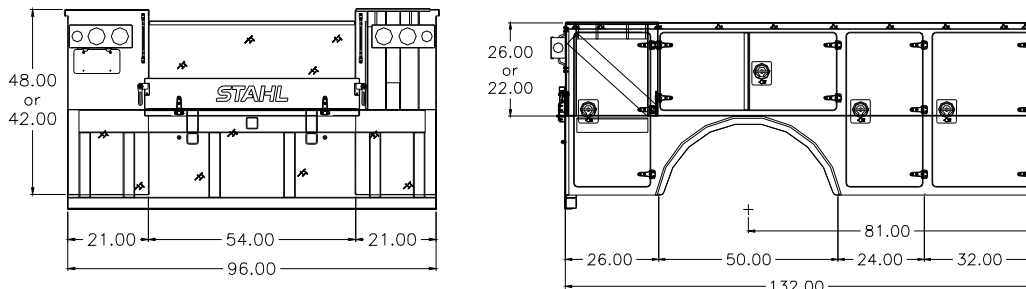
- Bumpers
- Dome Lights
- Fuel Fill (Alum)
- Hooks
- LED Lights
- Louvers
- LowSliding Roof
- Non-slip Bedliner
- Paint and Install
- Shelves
- Slam Action Tailgate
- Tank Holder
- Tie down Rings
- Toolbox Tray
- Tray

*Rubber fenderettes: 48" high bodies have 24" fender radius for R22.5" tires.
42" high bodies have 21" fender radius for R19.5" tires.

108" Body



132" Body



Due to constant product evaluations and improvements, specifications and options are subject to change without notice.

