

PALIFT HOOKLIFT SYSTEM

PALFINGER **PALIFT**



PALIFT – THE INNOVATIVE VERSATILE CONTAINER TRANSFER SYSTEM

PALFINGER PALIFT

The PALFINGER/PALIFT product was developed during the early 70's and has found uses in the following applications and industries:

- Solid and liquid waste removal
- Demolition
- Scrap metal and recycling
- Landscaping
- Agricultural
- Municipal
- Fire brigade
- Military



The main reason why the hookloader has found such wide and broad appeal is that the system allows an unparalleled degree of VERSATILITY and efficiency

- More containers can be handled in a shorter amount of time
- With a variety of container styles one truck can do the work of several



The PALIFT HOOKLIFT – How does it work?

The key word is "simple". The operator backs the truck toward the container. With the in-cab controls, the operator switches on the power take-off, lowers the hydraulic arm and engages the container with the hook. He then activates the two main cylinders that pull the container onto the chassis and lock it into position. The operator then turns off the power take-off and drives away.

It takes less than one minute from the time the operator shifted the truck into reverse. The PALIFT has one major purpose: To help our customers pick-up, drop-off, transport, unload or dump containers, or equipment – safer and faster – and that means larger profits.

One of the main features is the driver never leaves the cab – this increases productivity and safety.

Other PALIFT features:

- A sliding or articulating jib
- Dual main cylinders
- In-cab pneumatic or electric controls
- A direct mount "PARKER" piston pump
- JIC fittings and hoses
- 3-year warranty/ main steel components



FEATURES & BENEFITS

SINGLE VERSUS DUAL POINTS OF ARTICULATION

- All PALIFT hoists feature DUAL POINTS OF ARTICULATION.
- In addition to the pick-up/set-off mode the PALIFT features a separate dump-mode.
- With single articulation hoists the container moves rearward when dumping and often hits the ground before a full dump angle is reached.



DUAL SERIES JIBS

The PALIFT features both manually or hydraulically adjustable jibs enabling the driver to pick-up containers with different height A-frames.

HOOK VERSUS CABLE

- Automatic pick-up meaning that the driver does not have to leave the cab to engage or disengage with a container.
- The hook is operated from inside the cab where the driver is SAFE.
- The hook hoist has fewer parts and requires less maintenance than a cable hoist.
- The PALIFT hoist provides power-on and power-off through the use of hydraulic cylinders. Containers are easily loaded onto docks and trailers.
- The hooklift operators can approach and connect with a container within a 60° arc.
- No need for the hooklift driver to manhandle a cable or to be in the danger zone between the truck and the container.



Widest range of capacities, starting at 9,000 lbs up to 68,000 lbs including the industry's only semi-trailer hooklift system



Note:
Specifications subject to change without notice.
Truck recommendations are provided as a general guide only.

PALIFT C 09 S C 09 L A VERSATILE, INDISPENSABLE MACHINE

36-1/4" pickup bar height, articulating jib, jib hook equipped with safety latch, single jib cylinder equipped with single counterbalance valve and single tipping cylinder equipped with dual counterbalance valve, jib interlock, 6-1/4" subframe height, dual lever in cab electric controls, direct mount axial piston pump.

C 09 S - HOOKLIFT HOIST (short)

FEATURES:

- 9,000 lb. capacity
- 8' - 10' container length range
- 53 degree dump angle
- Chassis requirements: 2 axle, 14,500 lb. recommended GVWR with 60" CA.



Model	Capacity in LBS	Container Length (ft.)	Dump Angle	Recommended Dimension (Inches)		Recommended GVW Rating (lbs)
				CA (4X2)	CT (6X4)	
C 09 S	9,000	8-10	53°	60	N/A	14,500

C 09 L - HOOKLIFT HOIST (long)

FEATURES:

- 9,000 lb. capacity
- 10' - 12' container length range
- 50 degree dump angle
- Chassis requirements: 2 axle, 14,500 lb. recommended GVWR with 84" CA.



Model	Capacity in LBS	Container Length (ft.)	Dump Angle	Recommended Dimension (Inches)		Recommended GVW Rating (lbs)
				CA (4X2)	CT (6X4)	
C 09 L	9,000	10-12	50°	84	N/A	14,500

PALIFT T 12 S T 12 L

MAXIMUM PAYLOAD FOR SMALL TRUCKS

36-1/4" pickup bar height, sliding jib, single jib cylinder equipped with single counterbalance valve and dual tipping cylinders equipped with dual counterbalance valve, jib interlock, 6-1/4" subframe height, dual lever in cab electric controls, direct mount axial piston pump and aluminum valve body and junction box cover.

T 12 S - HOOKLIFT HOIST (short)

FEATURES:

- 12,000 lb. capacity
- 10' - 12' container length range
- 52 degree dump angle
- Chassis requirements: 2 axle, 18,000 lb. recommended GVWR with 84" CA.

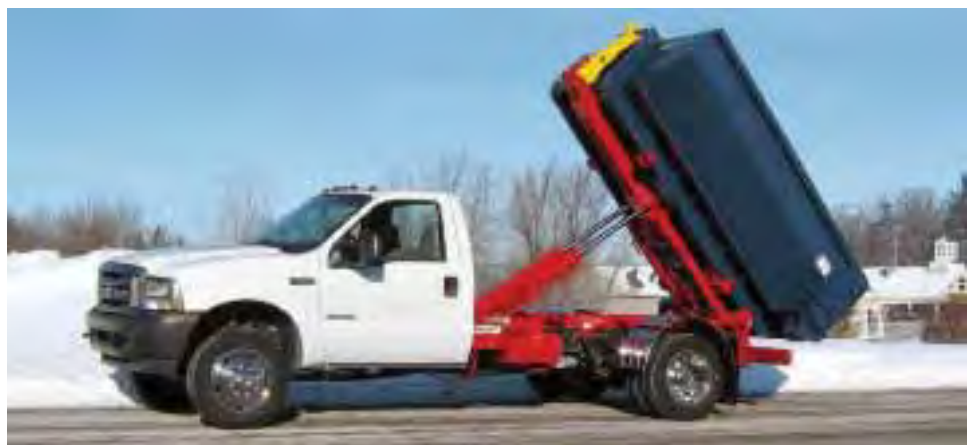


Model	Capacity in LBS	Container Length (ft.)	Dump Angle	Recommended Dimension (Inches)		Recommended GVW Rating (lbs)
				CA (4X2)	CT (6X4)	
T 12 S	12,000	10-12	52°	84	N/A	18,000

T 12 L - HOOKLIFT HOIST (long)

FEATURES:

- 12,000 lb. capacity
- 11' - 14' container length range
- 48 degree dump angle
- Chassis requirements: 2 axle, 18,000 lb. recommended GVWR with 108" CA.



Model	Capacity in LBS	Container Length (ft.)	Dump Angle	Recommended Dimension (Inches)		Recommended GVW Rating (lbs)
				CA (4X2)	CT (6X4)	
T 12 L	12,000	11-14	48°	108	N/A	18,000

PALIFT T 18.5 M DESIGNED FOR NON CDL CHASSIS APPLICATIONS

54" pickup bar height, sliding jib cylinder equipped with single counterbalance valve and dual tipping cylinders equipped with dual counterbalance valve, jib interlock, 7.87" subframe height, dual lever 2 speed in cab electric controls, direct mount axial piston pump and aluminum valve body and junction box cover.

T 18.5 M - HOOKLIFT HOIST (medium)



Model	Capacity in LBS	Container Length (ft.)	Dump Angle	Recommended Dimension (Inches)		Recommended GVW Rating (lbs)
				CA (4X2)	CT (6X4)	
T 18.5 M	18,500	12-16	54°	130-140	N/A	26,000

FEATURES:

- 18,500 lb. capacity
- 12' - 16' container length range
- Full electric, 2 speed controls
- 54 degree dump angle
- Chassis requirements: 2 axle, 26,000 lb. recommended GVWR with 130-140" CA.

T 24 S PALIFT T 24 M T 24 L

THE HEAVY HITTER AMONG MEDIUM SIZED HOISTS

54" pickup bar height, sliding jib, single jib cylinder equipped with single counterbalance valve and dual tipping cylinders equipped with dual counterbalance valve, jib interlock, 8.7" subframe height, dual lever 2 speed in cab electric controls, direct mount axial piston pump and aluminum valve body and junction box cover.

T 24 S - HOOKLIFT HOIST (short)

FEATURES:

- 24,000 lb. capacity
- 11' - 14' container length range
- 50 degree dump angle
- Full electric, 2 speed controls
- Chassis requirements: 2 axle, 33,000 lb. recommended GVWR with 110-120" CA.

Options: Full electric controls for chassis without air brakes



Model	Capacity in LBS	Container Length (ft.)	Dump Angle	Recommended Dimension (Inches)		Recommended GVW Rating (lbs)
				CA (4X2)	CT (6X4)	
T 24 S	24,000	11-14	50°	110-120	N/A	33,000

T 24 M - HOOKLIFT HOIST (medium)

FEATURES:

- 24,000 lb. capacity
- 12' - 16' container length range
- 50 degree dump angle
- Full electric, 2 speed controls
- Chassis requirements: 2 axle, 33,000 lb. recommended GVWR with 130-140" CA.

Options: Full electric controls for chassis without air brakes



Model	Capacity in LBS	Container Length (ft.)	Dump Angle	Recommended Dimension (Inches)		Recommended GVW Rating (lbs)
				CA (4X2)	CT (6X4)	
T 24 M	24,000	12-16	50°	130-140	N/A	33,000

T 24 L - HOOKLIFT HOIST (long)

FEATURES:

- 24,000 lb. capacity
- 14' - 18' container length range
- 50 degree dump angle
- Full electric, 2 speed controls
- Chassis requirements: 2 axle, 33,000 lb. recommended GVWR with 150-160" CA.

Options: Full electric controls for chassis without air brakes



Model	Capacity in LBS	Container Length (ft.)	Dump Angle	Recommended Dimension (Inches)		Recommended GVW Rating (lbs)
				CA (4X2)	CT (6X4)	
T 24 L	24,000	14-18	50°	150-160	N/A	33,000

PALIFT T 24 ST T 24 MT

THE MOST VERSATILE HOOKLIFT OF ANY KIND

Dual series hydraulically actuated 36-1/4" and 54" pickup bar heights, sliding jib, single jib cylinder equipped with single counterbalance valve and dual tipping cylinders equipped with dual counterbalance valve, jib interlock, 8.7" subframe height, three lever 2 speed in cab electric controls, direct mount axial piston pump and aluminum valve body and junction box cover.

FEATURES:

- 24,000 lb. capacity
- 11' - 14' container length range
- 50 degree dump angle
- Full electric, 2 speed controls
- Chassis requirements: 2 axle, 33,000 lb. recommended GVWR with 110-120" CA.

Dual series hydraulically actuated 36-1/4" and 54" pickup bar heights.



FEATURES:

- 24,000 lb. capacity
- 12' - 16' container length range
- 50 degree dump angle
- Full electric, 2 speed controls
- Chassis requirements: 2 axle, 33,000 lb. recommended GVWR with 130-140" CA.

T 24 ST - HOOKLIFT HOIST (short)



Model	Capacity in LBS	Container Length (ft.)	Dump Angle	Recommended Dimension (Inches)		Recommended GVW Rating (lbs)
				CA (4X2)	CT (6X4)	
T 24 ST	24,000	11-14	50°	110-120	N/A	33,000

T 24 MT - HOOKLIFT HOIST (medium)



Model	Capacity in LBS	Container Length (ft.)	Dump Angle	Recommended Dimension (Inches)		Recommended GVW Rating (lbs)
				CA (4X2)	CT (6X4)	
T 24 MT	24,000	12-16	50°	130-140	N/A	33,000

PALIFT T 30 S T 30 L

A SOLID ENTRY INTO THE HEAVY-DUTY CLASS

Dual series 54" and 61-3/4" pickup bar heights, sliding jib, single jib cylinder equipped with single counterbalance valve and dual tipping cylinders equipped with dual counterbalance valve, jib interlock, 8.7" subframe height, dual lever 2 speed in cab electric over air controls, direct mount axial piston pump and aluminum valve body and junction box cover.

T 30 S - HOOKLIFT HOIST (short)

FEATURES:

- 30,000 lb. capacity
- 12' - 15' container length range
- 50 degree dump angle
- Chassis requirements:
3 axle, 50,000 lb. minimum recommended GVWR with 115-125" CT.



Model	Capacity in LBS	Container Length (ft.)	Dump Angle	Recommended Dimension (Inches)		Recommended GVW Rating (lbs)
				CA (4X2)	CT (6X4)	
T 30 S	30,000	12-15	50°	120-130	115-125	50,000

T 30 L - HOOKLIFT HOIST (long)

FEATURES:

- 30,000 lb. capacity
- 15' - 20' container length range
- 47 degree dump angle
- Chassis requirements:
3 axle, 50,000 lb. recommended GVWR with 150-160" CT.



Model	Capacity in LBS	Container Length (ft.)	Dump Angle	Recommended Dimension (Inches)		Recommended GVW Rating (lbs)
				CA (4X2)	CT (6X4)	
T 30 L	30,000	15-20	47°	N/A	150-160	50,000

*Contact technical department for recommendations

PALIFT T 40 S T 40 L

A MULTI-TALENTED PERFORMER

Dual series 54" and 61-3/4" pickup bar heights, sliding jib, single jib cylinder equipped with single counterbalance valve and dual tipping cylinders equipped with dual counterbalance valve, jib interlock, 10.63" subframe height, dual lever 2 speed in cab electric over air controls, direct mount axial piston pump and aluminum valve body and junction box cover.

T 40 S - HOOKLIFT HOIST (short)

FEATURES:

- 40,000 lb. capacity
- 14' - 18' container length range
- 50 degree dump angle
- Chassis requirements: 3 axle, 54,000 lb. minimum recommended GVWR with 135-145" CT.

OPTIONS:

- Hydraulic rear roller stabilizer – using standard 2 lever cab controls – with stabilizer tied into jib circuit
- Hydraulic rear roller stabilizer – using 3 lever cab controls – with independent lever to control stabilizer



Model	Capacity in LBS	Container Length (ft.)	Dump Angle	Recommended Dimension (Inches)		Recommended GVW Rating (lbs)
				CA (4X2)	CT (6X4)	
T 40 S	40,000	14-18	50°	N/A	135-145	54,000

T 40 L - HOOKLIFT HOIST (long)

FEATURES:

- 40,000 lb. capacity
- 16' - 22' container length range
- 48 degree dump angle
- Chassis requirements: 3 axle, 54,000 lb. recommended GVWR with 180-190" CT.

OPTIONS:

- Hydraulic rear roller stabilizer – using standard 2 lever cab controls – with stabilizer tied into jib circuit
- Hydraulic rear roller stabilizer – using 3 lever cab controls – with independent lever to control stabilizer



Model	Capacity in LBS	Container Length (ft.)	Dump Angle	Recommended Dimension (Inches)		Recommended GVW Rating (lbs)
				CA (4X2)	CT (6X4)	
T 40 L	40,000	16-22	48°	N/A	180-190	54,000

PALIFT T 50 THE POWERHOUSE IN THE HEAVY-DUTY LEAGUE

Dual series 54" and 61-3/4" pickup bar heights, sliding jib, single jib cylinder equipped with single counterbalance valve and dual tipping cylinders equipped with dual counterbalance valve, jib interlock, 10.63" subframe height, dual lever 2 speed in cab electric over air controls, direct mount axial piston pump, using 2 lever cab controls and aluminum valve body and junction box cover, tandem rear rollers.

T 50 - HOOKLIFT HOIST



FEATURES:

- 50,000 lb. capacity
- 16' - 22' container length range
- 48 degree dump angle
- Chassis requirements: 3 axle, 64,000 lb. recommended GVWR with 185-195" CT

Model	Capacity in LBS	Container Length (ft.)	Dump Angle	Recommended Dimension (Inches)		Recommended GVW Rating (lbs)
				CA (4X2)	CT (6X4)	
T 50	50,000	16-22	48°	N/A	185-195	64,000

OPTIONS:

- Hydraulic rear roller stabilizer – using standard 2 standard lever cab controls – with stabilizer tied into jib circuit
- Hydraulic rear roller stabilizer – using 3 lever cab controls – with independent lever to control stabilizer



PALIFT T 60 RAW POWER IN MODERN PACKAGING

Dual series 54" and 61-3/4" pickup bar heights, sliding jib, single jib cylinder equipped with single counterbalance valve and dual tipping cylinders equipped with dual counterbalance valve, jib interlock, 10.63" subframe height, three lever 2 speed in cab electric over air controls, direct mount axial piston pump, hydraulic rear roller stabilizer and aluminum valve body and junction box cover, tandem rear rollers.

T 60 - HOOKLIFT HOIST



Model	Capacity in LBS	Container Length (ft.)	Dump Angle	Recommended Dimension (Inches)		Recommended GVW Rating (lbs)
				CA (4X2)	CT (6X4)	
T 60	60,000	16-22	50°	N/A	185-195	64,000

FEATURES:

- 60,000 lb. capacity
- 16' - 22' container length range
- 50 degree dump angle
- Rear roller stabilizer
- Chassis requirements: 3 axle, 64,000 lb. recommended GVWR with 185-195" CT.



PALIFT G 68 IN A CLASS OF IT'S OWN

61-3/4" pickup bar height, sliding jib and articulating middle frame, all circuits equipped with dual counterbalance valves, jib interlock, 15.5" subframe height, five lever in cab air controls, direct mount axial piston pump, hydraulic rear roller stabilizer, tandem rear rollers.

PALIFT G 68 HOOKLIFT HOIST



FEATURES:

- 68,000 lb. capacity
- 18' - 23' container length range
- 47 degree dump angle
- Rear roller stabilizer
- Chassis requirements: 3 axle, 66,000 lb. minimum – 86,000 lb. recommended GVWR with 195-205" CT.

Model	Capacity in LBS	Container Length (ft.)	Dump Angle	Recommended Dimension (Inches)		Recommended GVW Rating (lbs)
				CA (4X2)	CT (6X4)	
G 68	68,000	18-23	47°	N/A	195-205	66,000-86,000



PALIFT G 68 HA

UNMATCHED SIZE AND POWER

61-3/4" pickup bar height, sliding and articulating jib and articulating middle frame, all circuits equipped with dual counterbalance valves, jib interlock 45 degree dump angle, six lever in cab air controls, direct mounted axial piston pump, hydraulic side stabilizer cylinders. Custom trailer chassis required. Contact your sales representative for lead time.

PALIFT G 68 HA SEMI-TRAILER MOUNTED HOOKLIFT HOIST



Model	Capacity in LBS	Container Length (ft.)	Dump Angle	Recommended Dimension (Inches)		Recommended GVW Rating (lbs)
				CA (4X2)	CT (6X4)	
G 68 HA	68,000	22-30	45°	N/A	*	*

*Contact technical department for recommendations

FEATURES:

- 68,000 lb. capacity
- 22' - 30' container length range
- 45 degree dump angle

OPTIONS:

Dump assist

PALIFT G 68 H THE SCRAP SPECIALIST

61-3/4" pickup bar height, sliding jib and articulating middle frame, all circuits equipped with dual counterbalance valve, jib interlock, five lever in cab air controls, direct mount axial piston pump, hydraulic side stabilizer cylinders. Use with shorter containers or to allow double trailer set-up. Custom trailer chassis required. Contact your sales representative for lead time.

PALIFT 68 H SEMI-TRAILER MOUNTED HOOKLIFT HOIST



FEATURES:

- 68,000 lb. capacity
- 22' - 30' container length range
- 45 degree dump angle

OPTIONS:

- Dump assist

Model	Capacity in LBS	Container Length (ft.)	Dump Angle	Recommended Dimension (Inches)		Recommended GVW Rating (lbs)
				CA (4X2)	CT (6X4)	
G 68 H	68,000	22-30	45°	N/A	*	*

*Contact technical department for recommendations

PALFINGER – A Lift Beyond The Rest

PALFINGER

CUSTOMER TESTIMONIALS

This is what some of our customers had to say about Palfinger Palift Systems:

Todd Odum, Owner, Olympic Disposal, Nashville, Tennessee –

"We can always rely on our Palift to be a safer and more timely approach to delivery and picking up containers. Our Palift really fits in to our approach to customer service. I always tell the drivers that we have one chance to make a first impression. When we show up with a good attitude along with equipment that is the latest technology, it really impresses the customer."

Brian Pidhirney, Owner/Operator of Hayshakers, Red Deer, Alberta –

Brian Pidhirney, owner of Hayshakers, uses his Palift for everything from recycling scrap metal to transporting grain. He feels that "it's a good unit; it's a dependable multipurpose truck."



Todd Odum, Owner, Olympic Disposal

PALFINGER UNIVERSITY



Because working smarter increases the benefits of our business solutions, Palfinger offers professional sales and service training courses to its employees, dealers, service centers and customers at Palfinger University.

The newly built training facility located in Tiffin Ohio, is equipped with the latest training and presentation technologies and provides a warm and friendly atmosphere where the students learn to become technically competent specialists. Product knowledge, features and benefits, hands-on operator training, maintenance, hydraulics and trouble shooting are just some of the courses offered at Palfinger University.

SPARE PARTS



The parts department utilizes a computerized inventory control system designed to accommodate after sales support, modifications and ongoing maintenance by end-users.

We will provide you with genuine PALFINGER spare parts, components, guaranteeing:

- Perfect function after installation
- Long life
- Low cost

Spare parts are available through our factory trained dealerships and service centers across The Americas, Mexico, Panama, Columbia, Venezuela, Ecuador and the Caribbean.

In U.S.A.:

4151 West State Route 18, Tiffin, OH 44883
Tel: 419-937-2190 Fax: 905-374-1203

Canada:

P.O. Box 846
Niagara Falls, ON L2E 6V6
Tel: 905-374-3363 Fax: 905-374-1203

YOUR PALFINGER/PALIFT DEALER

Call toll free 1-800-567-1554

www.palfinger-northamerica.com