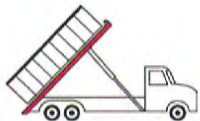
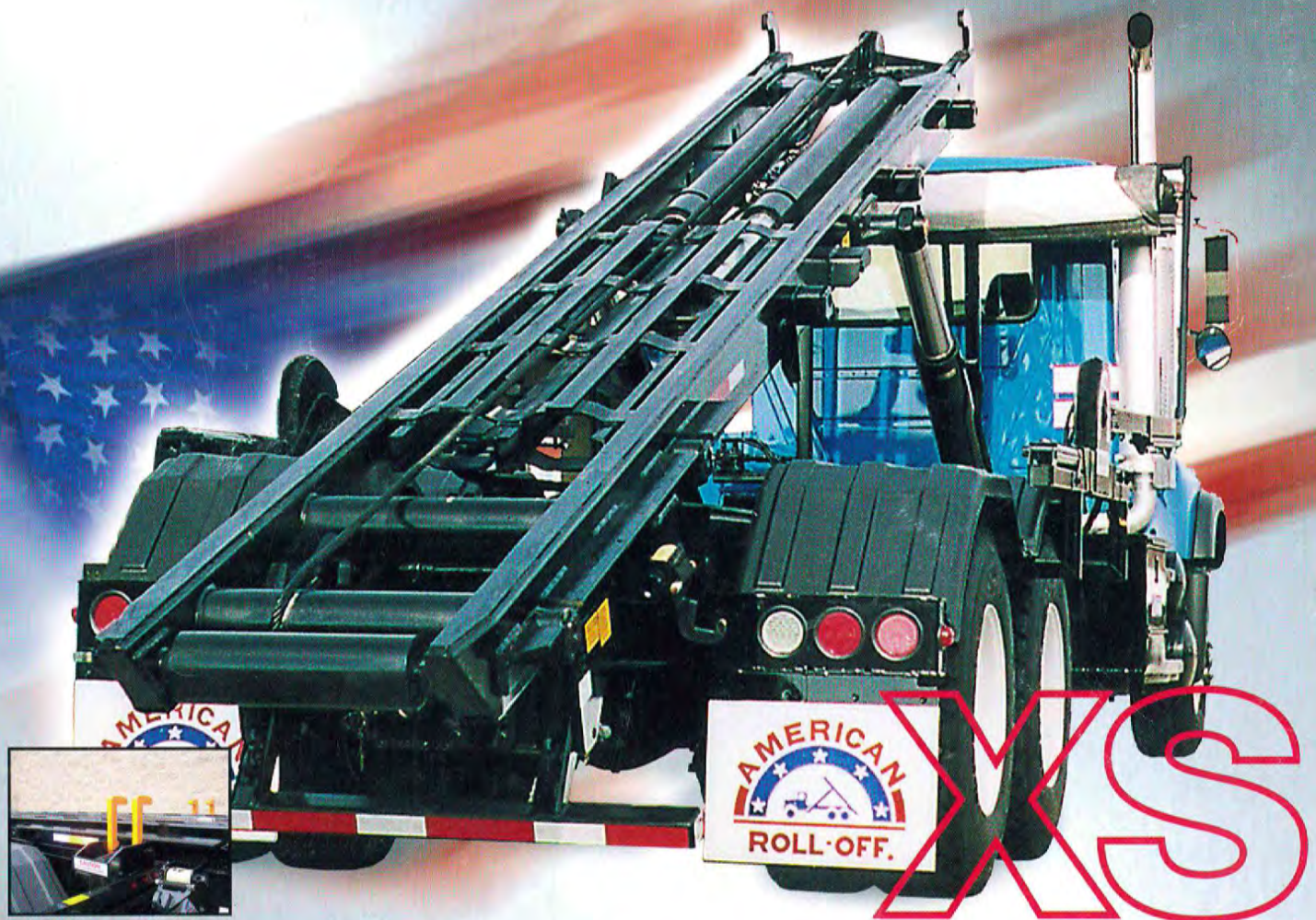


XS SERIES

60,000 lbs and 75,000 lbs Capacity

PALFINGER

NORTH AMERICA GROUP



STANDARD FEATURES INCLUDE:

- No subframe design
- High strength 10"x4" main frame rails
- Suitable for tandem or tri axle chassis
- Available with fixed or extendable tail
- 5 point container locks exceed DOT requirements
- Optional automatic rear lock (patent pending) highlighted above



A Member of the Palfinger North America Group

TRUCK
EQUIPMENT

"Everything for the Trucker"
www.truckequipinc.com

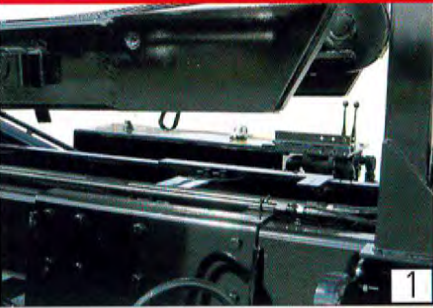
GREEN BAY, WI
680 Potts Ave.
Green Bay, WI 54304
(920) 494-7451
(800) 242-7337

APPLETON, WI
1750 Prospect Ct.
Appleton, WI 54911
(920) 749-4985
(866) 295-4386

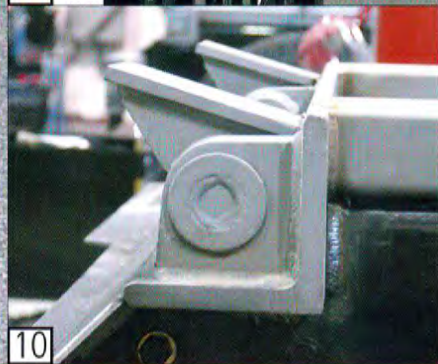
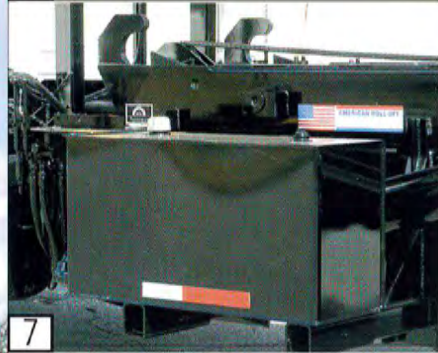
WAUSAU, WI
7202 Zinser Street
Schofield, WI 54476
(715) 355-0701
(877) 355-2924

ESCANABA, MI
1919 7th Ave. North
Escanaba, WI 49829
(906) 786-2286
(800) 242-3550

*XS Series is Available in: Outside Rail, and Inside/ Outside Rail
60,000 lbs and 75,000 lbs Capacity*



American Roll-Offs are engineered to eliminate down time. It's the small details; full flow hydraulics, high strength engineered materials, and hydraulic components that make our products exceptional. Plus every American Roll-Off goes through a 98 point quality check prior to delivery. Maybe now you can understand why we have the Industry's highest customer allegiance and satisfaction.....*Just ask our customers...*



The PALFINGER Principle



Omaha Standard Inc.

P.O. Box 5757

Trenton, NJ 08638

Tel: 1-609-588-5400

Toll Free: 1-800-851-8938

Fax: 1-609-588-4104

www.americanrolloff.com

Lift Cylinders	Can be configured to accept a single tire triaxle. Optional 3 stage cylinders available for dual tire triaxle or steerable axle.
Outside Rail Hoist	Features an 10"x4"x1/2" Main Frame.
See Through Track	For improved visibility while loading/ unloading container
Container Guides (3/4")	For added tail strength and short container handling
Auto Fold ICC Bumper	Controlled folding bumper requires no linkage. Patented
Container Locks	5-point tie down system that meets DOT regulations
Poly Fenders:	Resist corrosion and damage
LED Lights	Brake, Turn and Marker Lights featuring a plug-in wire harness
Standard Safety Features:	Body up light and Props Universal rear hold down winches Reflective safety tape

Highlighted Features

- 1 Subframeless hoist features less weight
- 2 Interchangeable cable sheaves with high strength aluminum bronze bushings
- 3 Universal cable hanger
- 4 Power Control Tower with Air Joysticks, PTO switch and and body up light
- 5 Spring loaded pull through front locks
- 6 Removable roller pin with bracket secured by a single bolt
- 7 60 gallon hydraulic tank mounted on tubular bracket with dual filters
- 8 P-51 pump, with 2-1/2" gear and a 2" suction line, and a T-Bolt clamp
- 9 50 GPM valve on a separate bracket
- 10 Hinge recessed into truck chassis, full width hinge shaft (1) piece construction