



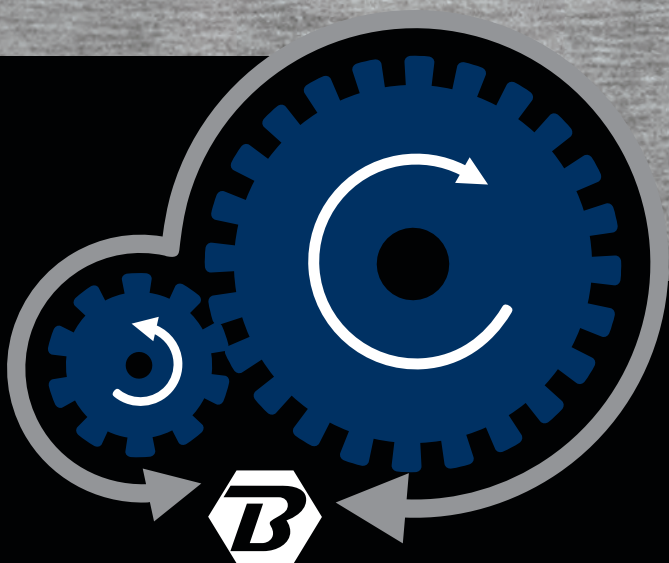
WHERE QUALITY MEETS
CUSTOMIZATION



At Brandon we pride ourselves to
be the foremost custom dump body
manufacturer in North America.

www.brandontruck.com

All photos in this document show optional equipment.





NEW MANAGEMENT WITH A NEW DIRECTION, IMPROVED PRODUCT QUALITY WITH THE SAME COMPETITIVE PRICING

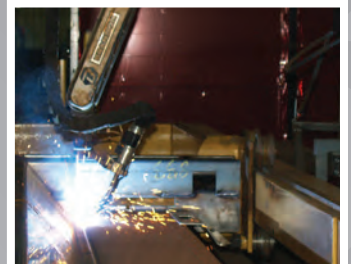
As the new owners of Brandon Truck Equipment, now known as Brandon Manufacturing, our first order of business was to elevate the company's culture to one that is based on a higher standard of customer service to both our dealers and our dealer's clients. Secondly, we set out to find more experienced industry veterans in both sales and engineering, while keeping in mind a requirement for a certain level of enthusiasm and energy that our customers could appreciate. Third, was to raise the quality standard of our product line to what we feel is the highest in the industry, yet still allowing our customers the freedom of customization of our product line to meet their particular markets and needs. We also raised the standard of our vendor partners to help increase the quality standard of not only our dump bodies, but our parts and accessories as well.

Our next objective was to invest in the newest technologies for both our office and our assembly plant to help us in two ways, one; to become more cost, effective so we could keep our product costs down allowing us to continue to offer one of the most competitively priced products on the market today, two; to become more efficient internally so we could address our customer's needs more quickly and more accurately. We continue to be one of the only body companies that uses robotic welders to ensure quality consistence in our products. Part of our investment into technologies was the creation of our new on-line ordering system, which is cutting edge for our industry and one of the most complete within our industry that we have seen.

With the help of our new team, we continue to make improvements and adjustments in all areas of the company, while never forgetting, nor changing the things that we have always done right. For example, our new product line breakdown into "Body Series" now makes it easier to find exactly what you're looking for, while the addition of new-product models has also allowed our dealers to move into new markets and service a wider variety of customers.

Our new marketing tag line "Where Quality Meets Customization" truly portrays the new Brandon and there is more to come in the future. We are very proud of this new brochure and invite you to take a closer look inside to find the model that best fits your needs.

*Yours in Service,
Sylvain & Benoit Lemaire*





MD

Our drop side One Ton Body is ready for all chassis including Ford, GMC, Dodge and others. The MD is available in mild steel or in 201/304 stainless steel. Our MD is available as a front mount telescopic or with an underbody hoist system with sub-frame.

MDC

Our drop side Contractor Body is ready for the toughest landscaping applications. The MDC is available in mild steel or in 201/304 stainless steel. Our MDC is available as a front mount telescopic or with an underbody hoist system with sub-frame.



SPECIFICATIONS

INSIDE WIDTH

87 1/2"

OUTSIDE WIDTH

96"

	AVAILABLE DIMENSIONS	MATERIAL	STEEL OPTIONS	STAINLESS OPTIONS
MD				
FLOOR	8' to 12' 6"	10 gauge - 150 Brinell	7 gauge - 150 Brinell	7 or 10 gauge - 201/304 SS
SIDE	12" - 15" - 18"	11 gauge - 250 Brinell Fixed or drop sides	7 or 10 gauge - 250 Brinell Fixed or drop sides	7 or 10 gauge - 201/304 SS Fixed or drop sides
TAILGATE	15" - 24"	11 gauge - 250 Brinell	7 or 10 gauge - 250 Brinell	7 or 10 gauge - 201/304 SS
FRONT	Customized to truck	11 gauge - 250 Brinell	N/A	N/A
LONGMEMBERS	6", 8" & 10" height choice of formed I-beam or "C-Channel"	3/16" - 150 Brinell	N/A	N/A
CAB SHIELD	12" - 18" - 24"	10 gauge - 150 Brinell	7 gauge - 250 Brinell	7 or 10 gauge - 201/304 SS
MDC				
FLOOR	13' to 16'	3/16" - 200 Brinell	3/16" or 1/4" - 450 Brinell	7 gauge or 1/4" - 201/304 SS
SIDE	12" - 15" - 18"	11 gauge - 250 Brinell Fixed or drop sides	7 or 10 gauge - 250 Brinell Fixed or double drop sides	7 or 10 gauge - 201/304 SS Fixed or double drop sides
TAILGATE	18" - 24"	11 gauge - 250 Brinell	7 or 10 gauge - 250 Brinell	7 or 10 gauge - 201/304 SS
FRONT	Customized to truck	11 gauge - 250 Brinell	N/A	N/A
LONGMEMBERS	6", 8" & 10" height	3/16" - 150 Brinell	N/A	N/A
CAB SHIELD	12" - 18" - 24"	10 gauge - 150 Brinell	7 gauge - 250 Brinell	7 or 10 gauge - 201/304 SS

NOTE: MDC18' and 20' length available with fix sides only.

This chart is only generic and does not give you all the specifications by model. All photos in this document may show optional equipment.


MDS & MDS+ - Idea for general application single axle municipal trucks that need to last.

Our 5 to 7 Yard municipal style dump body is available in 10 or 7 gauge mild steel with the option of 10 or 7 gauge 201/304 stainless steel. The MDS is also available with floor options of 3/16" or 1/4" - Brinell 450 floor or 1/4" 304 stainless steel. Available as a front mount telescopic or with an underbody hoist system.


SPECIFICATIONS

INSIDE WIDTH	87 1/2"	OUTSIDE WIDTH	96"
--------------	---------	---------------	-----

	AVAILABLE DIMENSIONS	MATERIAL	STEEL OPTIONS	STAINLESS OPTIONS
MDS				
FLOOR	8' to 16'	3/16" - 200 Brinell	3/16" or 1/4" - 450 Brinell	7 gauge or 1/4" - 201/304 SS
SIDE	24" - 36"	11 gauge - 250 Brinell	10 gauge - 250 Brinell	10 gauge - 201/304 SS
TAILGATE	24" - 42"	11 gauge - 250 Brinell	10 gauge - 250 Brinell	10 gauge - 201/304 SS
FRONT	Customized to truck	11 gauge - 250 Brinell	N/A	10 gauge - 201/304 SS
LONGMEMBERS	6", 8" or 10" choice of formed or I-beams	3/16" - 150 Brinell	N/A	N/A
CAB SHIELD	12" - 36"	10 gauge - 150 Brinell	7 gauge - 250 Brinell	7 or 10 gauge - 201/304 SS
MDS+				
FLOOR	8' to 16'	3/16" - 200 Brinell	3/16" or 1/4" - 450 Brinell	7 gauge or 1/4" - 201/304 SS
SIDE	24" - 42"	7 gauge - 250 Brinell	N/A	7 gauge - 201/304 SS
TAILGATE	24" - 48"	7 gauge - 250 Brinell	N/A	7 gauge - 201/304 SS
FRONT	Customized to truck	7 gauge - 250 Brinell	N/A	7 gauge - 201/304 SS
LONGMEMBERS	6", 8" & 10" height	3/16" - 250 Brinell	N/A	N/A
CAB SHIELD	12" - 18" - 24"	10 gauge - 150 Brinell	7 gauge - 250 Brinell	7 or 10 gauge - 201/304 SS

This chart is only generic and does not give you all the specifications by model. All photos in this document may show optional equipment.



FHA & FHA+

Our Brinell 400/450 light weight heavy duty body is the ideal body for blacktopping, aggregate, and general construction, as well as other applications that demand a quality product but when weight is still a concern.



SPECIFICATIONS

INSIDE WIDTH

89 1/2"

OUTSIDE WIDTH

99"

	AVAILABLE DIMENSIONS	MATERIAL
FHA		
FLOOR	10' to 22'	3/16" - 450 Brinell
SIDE	24" to 76"	5/32" - 450 Brinell
TAILGATE	24" to 76"	3/16" - 450 Brinell
FRONT	Customized to truck	5/32" - 450 Brinell
LONGMEMBERS	6", 8", 10" & 12" choice of formed or I-beams	3/16" - 250 Brinell
CAB SHIELD	18" to 48"	7 or 10 gauge - 150 Brinell
FHA+		
FLOOR	10' to 22'	3/16" - 450 Brinell
SIDE	24" to 76"	3/16" - 450 Brinell
TAILGATE	24" to 76"	3/16" - 450 Brinell
FRONT	Customized to truck	3/16" - 450 Brinell
LONGMEMBERS	6", 8", 10" & 12" choice of formed or I-beams	3/16" - 250 Brinell
CAB SHIELD	18" to 48"	7 or 10 gauge - 150 Brinell

This chart is only generic and does not give you all the specifications by model. All photos in this document may show optional equipment.



FHD & FHD+

Our Brinell 400/450 heavy duty body is the ideal body for heavy hauling, heavy aggregate, excavation, general construction, as well as other applications that demand a quality product that is built to last.



SPECIFICATIONS

INSIDE WIDTH

89 1/2"

OUTSIDE WIDTH

99"

	AVAILABLE DIMENSIONS	MATERIAL
FHD		
FLOOR	10' to 22'	1/4" - 450 Brinell
SIDE	24" to 76"	3/16" - 450 Brinell
TAILGATE	24" to 76"	1/4" - 450 Brinell
FRONT	Customized to truck	3/16" - 450 Brinell
LONGMEMBERS	6", 8", 10" & 12" choice of formed or I-beams	3/16" - 250 Brinell
CAB SHIELD	18" to 48"	7 or 10 gauge - 150 Brinell
FHD+		
FLOOR	10' to 22'	1/4" - 450 Brinell
SIDE	24" to 76"	1/4" - 450 Brinell
TAILGATE	24" to 76"	1/4" - 450 Brinell
FRONT	Customized to truck	1/4" - 450 Brinell
LONGMEMBERS	6", 8", 10" & 12" choice of formed or I-beams	3/16" - 250 Brinell
CAB SHIELD	18" to 48"	7 or 10 gauge - 150 Brinell

This chart is only generic and does not give you all the specifications by model. All photos in this document may show optional equipment.



ULD & ULD+

Our Ultra light body is the ideal body for volume haulers where weight is money.

The ULD is one of the lightest steel dump bodies on the market today, made with the best available steel on the market.



SPECIFICATIONS

INSIDE WIDTH

89 1/2"

OUTSIDE WIDTH

99"

	AVAILABLE DIMENSIONS	MATERIAL
ULD		
FLOOR	10' to 22'	5/32" - 450 Brinell
SIDE	24" to 72"	1/8" - 450 Brinell
TAILGATE	24" to 76"	5/32" - 450 Brinell
FRONT	Customized to truck	1/8" - 450 Brinell
LONGMEMBERS	6", 8", 10" & 12" choice of formed or I-beams	3/16" - 250 Brinell
CAB SHIELD	24" to 48"	7 to 10 gauge - 150 Brinell
ULD+		
FLOOR	10' to 22'	5/32" - 450 Brinell
SIDE	24" to 72"	5/32" - 450 Brinell
TAILGATE	24" to 76"	5/32" - 450 Brinell
FRONT	Customized to truck	5/32" - 450 Brinell
LONGMEMBERS	6", 8", 10" & 12" choice of formed or I-beams	3/16" - 250 Brinell
CAB SHIELD	24" to 48"	7 to 10 gauge - 150 Brinell

This chart is only generic and does not give you all the specifications by model. All photos in this document may show optional equipment.



EUL, ELD & EHD

Our elliptical style body is the ideal body for volume hauling (EUL) to light & heavy duty demolition, quarry work and light to medium duty mining applications (ELD/EHD).



SPECIFICATIONS

INSIDE WIDTH

89 1/2"

OUTSIDE WIDTH

99"

	AVAILABLE DIMENSIONS	MATERIAL
EUL		
FLOOR	10" to 22"	5/32" - 450 Brinell
SIDE	30" to 66"	5/32" - 450 Brinell
TAILGATE	30" to 72"	5/32" - 450 Brinell
FRONT	Customized to truck	5/32" - 450 Brinell
LONGMEMBERS	6", 8", 10" & 12" choice of formed or I-beams	3/16" - 250 Brinell
CAB SHIELD	24" to 48"	7 to 10 gauge - 150 Brinell
ELD		
FLOOR	10" to 22"	3/16" - 450 Brinell
SIDE	30" to 66"	3/16" - 450 Brinell
TAILGATE	30" to 72"	3/16" - 450 Brinell
FRONT	Customized to truck	3/16" - 450 Brinell
LONGMEMBERS	6", 8", 10" & 12" choice of formed or I-beams	3/16" - 250 Brinell
CAB SHIELD	24" to 48"	7 to 10 gauge - 150 Brinell
EHD		
FLOOR	10" to 22"	1/4" - 450 Brinell
SIDE	30" to 66"	1/4" - 450 Brinell
TAILGATE	30" to 72"	1/4" - 450 Brinell
FRONT	Customized to truck	1/4" - 450 Brinell
LONGMEMBERS	6", 8", 10" & 12" choice of formed or I-beams	3/16" - 250 Brinell
CAB SHIELD	24" to 48"	7 to 10 gauge - 150 Brinell

This chart is only generic and does not give you all the specifications by model. All photos in this document may show optional equipment.



LD, SLD & HD

Our mild steel body line is the ideal body for light, medium and heavy duty applications where cost is a factor, but a quality product is needed. This series is also available in 201/304 stainless steel.



SPECIFICATIONS

INSIDE WIDTH

89 1/2"

OUTSIDE WIDTH

99"

	AVAILABLE DIMENSIONS	MATERIAL	STEEL OPTIONS	STAINLESS OPTIONS
LD				
FLOOR	10' to 22'	3/16" - 200 Brinell	3/16" or 1/4" - 450 Brinell	1/4" - 304 SS
SIDE	30" - 36" - 42" - 48"	11 gauge - 250 Brinell	N/A	7 or 10 gauge - 201/304 SS
TAILGATE	42" - 48" - 54" - 60"	3/16" - 200 Brinell	N/A	N/A
FRONT	Customized to truck	11 gauge - 250 Brinell	N/A	N/A
LONGMEMBERS	8" & 10" height	3/16" - 150 Brinell	N/A	N/A
CAB SHIELD	12" - 18" - 24" - 30" - 36"	11 gauge - 150 Brinell	N/A	7 or 10 gauge - 201/304 SS
SLD				
FLOOR	10' to 22"	1/4" - 200 Brinell	3/16" or 1/4" - 450 Brinell	1/4" - 304 SS
SIDE	30" - 36" - 42" - 48"	10 gauge - 150 Brinell	N/A	7 or 10 gauge - 201/304 SS
TAILGATE	42" - 48" - 54" - 60"	1/4" - 200 Brinell	N/A	N/A
FRONT	Customized to truck	10 gauge - 150 Brinell	N/A	N/A
LONGMEMBERS	8" & 10" height	3/16" - 150 Brinell	N/A	N/A
CAB SHIELD	12" - 18" - 24" - 30" - 36"	11 gauge - 150 Brinell	N/A	7 or 10 gauge - 201/304 SS
HD				
FLOOR	10' to 22'	1/4" - 150 Brinell	3/16" or 1/4" - 450 Brinell	1/4" - 304 SS
SIDE	30" - 36" - 42" - 48"	3/16" - 150 Brinell	N/A	7 or 10 gauge - 201/304 SS
TAILGATE	42" - 48" - 54" - 60"	1/4" - 150 Brinell	N/A	N/A
FRONT	Customized to truck	3/16" - 150 Brinell	N/A	N/A
LONGMEMBERS	8" & 10" height	3/16" - 150 Brinell	N/A	N/A
CAB SHIELD	12" - 18" - 24" - 30" - 36" - 42"	11 gauge - 150 Brinell	N/A	7 or 10 gauge - 201/304 SS

This chart is only generic and does not give you all the specifications by model. All photos in this document may show optional equipment.



BDR, BDR+ & BDRX

For extreme applications, including demolition, waste management (white days), scrap steel hauling, rendering and disaster relief clean up. Built for front or rear grapple systems available as a front mount dumping or as a non-dumping body.



**Available with formed side, not shown above.*

SPECIFICATIONS

INSIDE WIDTH

92 1/2"

OUTSIDE WIDTH

102"

	AVAILABLE DIMENSIONS	MATERIAL
BDR		
FLOOR	16" to 26"	3/16" - 450 Brinell
SIDE	60" to 96"	3/16" - 450 Brinell
TAILGATE	60" to 96"	3/16" - 450 Brinell
FRONT	48" to 96"	3/16" - 450 Brinell
LONGMEMBERS	8" or 10"	3/16" - 250 Brinell
CAB SHIELD	24" to 48"	7 to 10 gauge - 150 Brinell
BDR+		
FLOOR	16" to 26"	1/4" - 450 Brinell
SIDE	60" to 96"	1/4" - 450 Brinell
TAILGATE	60" to 96"	1/4" - 450 Brinell
FRONT	48" to 96"	1/4" - 450 Brinell
LONGMEMBERS	8" or 10"	3/16" - 250 Brinell
CAB SHIELD	24" to 48"	7 to 10 gauge - 150 Brinell
BDRX		
FLOOR	16" to 26"	1/4" - 200 Brinell
SIDE	60" to 96"	3/16" - 150 Brinell
TAILGATE	60" to 96"	3/16" - 150 Brinell
FRONT	48" to 96"	3/16" - 150 Brinell
LONGMEMBERS	8" or 10"	3/16" - 250 Brinell
CAB SHIELD	24" to 48"	7 to 10 gauge - 150 Brinell

This chart is only generic and does not give you all the specifications by model. All photos in this document may show optional equipment.

BRL, BRM & BRH, BREX

Light duty mild steel to extreme duty for any job in a variety of styles. Available from 10 to 40 yards.



HOOK-LIFT

Hook-Lift bodies are available on all our dump body models & built to fit all available Hook-Lift systems.

**Call our office for more information.*



ROLL-OFF SPECIFICATIONS

	AVAILABLE DIMENSIONS	MATERIAL	
		BRL - Light Duty	BRM - Medium Duty
FLOOR	10 to 40 yard	3/16" - 200 Brinell	1/4" - 200 Brinell
SIDE	24" to 76"	10 gauge - 150 Brinell	3/16" - 150 Brinell
TAILGATE	24" to 76"	10 gauge - 150 Brinell	3/16" - 150 Brinell
FRONT	24" to 76"	10 gauge - 150 Brinell	3/16" - 150 Brinell
LONGMEMBERS	2" x 6" x 3/8"	For other options call office	For other options call office
ROLLERS	8" or 10" front/rear rollers	Front foot pedestal	Front foot pedestal
		BRH - Heavy Duty	BREX - Extreme Duty
FLOOR	10 to 40 yard	3/16" - 450 Brinell	1/4" - 450 Brinell
SIDE	24" to 76"	3/16" - 450 Brinell	1/4" - 450 Brinell
TAILGATE	24" to 76"	3/16" - 450 Brinell	1/4" - 450 Brinell
FRONT	24" to 76"	3/16" - 450 Brinell	1/4" - 450 Brinell
LONGMEMBERS	2" x 6" x 3/8"	For other options call office	1/4" - 450 Brinell
ROLLERS	8" or 10" front/rear rollers	Front foot pedestal	1/4" - 450 Brinell

This chart is only generic and does not give you all the specifications by model. All photos in this document may show optional equipment.

FFTB for Full Frame Trailers



QFTB for Quarter Frame Trailers



FLTB for Frame Less Trailers



**Custom built dump bodies for a variety
of applications to specific bid requirements**

You need it, will build it!



** Only a small sample of the multitude of custom bodies we have manufactured.*

TARP SYSTEMS

- Aero Electric Tarps
- Air Tarps
- Manual Tarps (with or without ground operation kit)
- Mesh or asphalt canvas

CAB SHIELDS

- 12" to 48"
- 13" extension
- Assembled or loose
- Narrow or full width
- Custom
- Light hole cut-outs (oval or round)
- LED & strobe lighting kits with marine & fire grade wiring harness

FRONT

- Standard straight front mount recess (12" deep)
- Flat front for underbody hoist
- Flat front for outside front mount hoist (brackets installed)
- Sloped front for front mount hoist
- Dog House for Pin to Pin hoist
- Intergraded front hydraulic tank (behind the front mount hoist)
- Front frame mount hydraulic tank
- Shovel holder/broom brackets
- Hyva front mount cylinders
- Mailhot front mount cylinders
- Cradle & hoist blocks (5 to 50 Ton)
- Front mount hoist Installation kits (tank, cradle, blocks & rear hinge) (5 to 50 ton)

SIDES

- 1 piece sides (formed top rail & rub rail — no welds)
- Smooth Sides
- Formed Aerodynamic sides
- Tapered/slopped sides
- Vertical posts
- Weld on Horizontal bracing
- Box bracing
- Tube top box rails
- Inverted angle irons
- Dirt shedding top rails
- No front post option
- Snow extension side board kit
- Steel side boards
- Single or double quick release drop sides for MD & MDC models

TAILGATE

- Standard sloped or straight gate
- Barn door style tailgate
- Swing out tailgate
- Double acting tailgate
- High-lift tailgate
 - Air or hydraulic external rear side mounted system
 - Air internal rear post mounted system
- Asphalt tailgate/bumper (reverse taper)
- Automatic/excavator tailgate
- Light hole cut-outs (oval or round)
- LED & strobe lighting kits with marine & fire grade wiring harness
- Standard 2 panel tailgate
 - 1, 3, 6 or 9 panel (vertical or horizontal style available)
- Coal/material chutes (1, 2 or 3) standard or galantine style
- Air or manual tailgate kit or combination of both systems
- Manual quick release tailgate system for MD & MDC models

REAR

- Flat bumper
- Asphalt aprons (8", 10" 12" or custom)
- Lighting bars
- Rear hinges (5 to 50 ton)
- 7 gauge 201/304 Stainless steel rear posts
- Slopped rear post with recessed hardware
- Scow ends (no gate at all)

UNDER THE BODY

- 8", 10" or 12" formed long member
- 6", 8" & 10" I-beams or "C" channel (with or without support flange)
- Champion Underbody hoists & sub-frames
- Body prop (one person operation)
- Mud flap bracket kits (front, rear or both)
- Brandon mud flaps (front & rear)
- Traditional heat kits (4" or 5" stainless steel)
- Thermo heat kits (for newer truck exhaust systems)

PRE-INSTALL OPTIONS

- Paint
- Pre-install cab shield (front clearance height needed)
- Pre-installed hoist, cradle and hoist blocks
- Pre-installed wiring & lighting kits (body & cab shield)
- Pre-Installed cab shield lighting bars
- Pre-installed body prop & mud flap bracket kits
- Pre-Installed tarp system (excluding canvas)

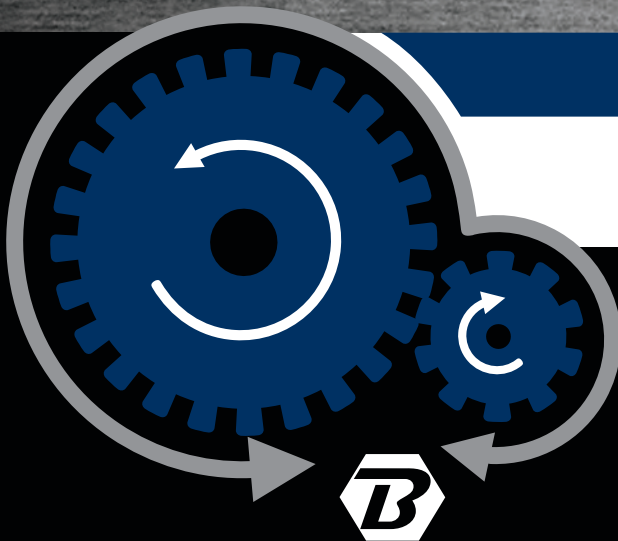




WHERE QUALITY
MEETS CUSTOMIZATION



www.brandontruck.com



TRUCK
EQUIPMENT
KEEP CALM AND TRUCK ON®

www.truckequipinc.com

Green Bay, WI
Wausau, WI
Appleton, WI
Escanaba, MI