

# Platforms & Storage Units

**PALFINGER**



The Heavy-duty welded construction, high grade materials and user friendly design of every Omaha Standard PALFINGER platform ensure value and durability for years to come.



# Omaha Standard PALFINGER

## Platforms


Choice of pressure treated yellow pine, apitong hardwood, treadplate steel, smooth steel, or steel over wood floor.

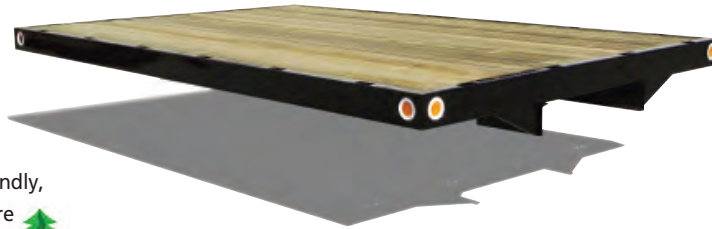
**\*\*E-Coat Finish:** Exclusive high gloss black acrylic electrocoat topcoat provides unmatched coverage and corrosion resistance

2x4 stake pockets are reinforced for added strength

96 inch wide standard, 102 inch wide available.

Cross members on 14 foot and longer platforms are on 12" centers

Rubber products are environmentally friendly, are stronger than other composites and are impervious to fluids, mud, oil and UV rays. 



Recessed light holes provide superior protection for lighting. All lighting meets FMVSS 108 requirements.

11 GA high strength roll-formed steel side, front and rear outrail.

Heavy gauge, high strength steel outrail and cross members combine with structural steel channel long members for the strongest platform available.

**Heavy duty platforms:** For medium and heavy duty commercial and agricultural uses.

Choice of pressure treated yellow pine, apitong hardwood, treadplate steel, smooth steel, or steel over wood floor.

**\*\*E-Coat Finish:** Exclusive high gloss black acrylic electrocoat topcoat provides unmatched coverage and corrosion resistance

4-inch structural channel front outrail.

6-inch structural channel side and rear outrail.


4-inch structural channel cross sills are on 12-inch centers.



Recessed rubber mounted lights are protected from impact and weather.

All lighting meets FMVSS 108 requirements.

7 GA buckplate.

Rubber products are environmentally friendly, are stronger than other composites and are impervious to fluids, mud, oil and UV rays. 

96-inch wide standard, 102-inch wide available.

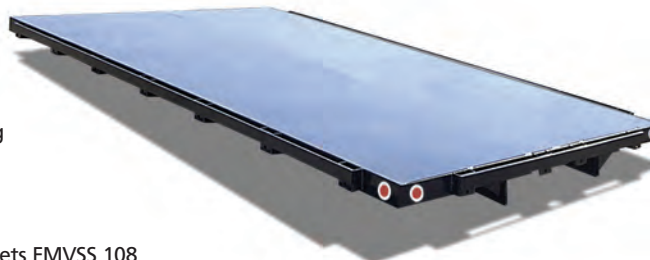
Heavy duty 3/8" by 2-1/2" banding rail for securing cargo.

**Super duty platforms:** Structural steel construction for the heaviest commercial hauling jobs.

3 inch structural channel cross-members are on 16 inch centers for 9'-16" bodies. Optional 12 inch on center cross-members

4 inch structural channel front and rear outrails

Heavy duty 3/8" by 2-1/2" banding rail for securing cargo



Exterior heavy duty 2x4 stake pockets

4 inch deep integrated formed side rails.

Smooth steel floor treadplate optional

All lighting meets FMVSS 108 requirements.

96 inch wide standard

Exterior heavy duty 2x4 stake pockets

**Patriot platforms:** For economical light duty commercial applications.



# Platforms

## Specifications and Side Assemblies

**PALFINGER**

Heavy Duty Dimensions and Weights\*

Platform Length & Width	Wood	Smooth Steel	Tread-plate 1/8"	Tread-plate 3/16"
8'-6" x 82"	524	695	718	847
8'-6" x 96"	561	751	778	928
9'-6" x 82"	627	839	870	1038
9'-6" x 96"	755	872	826	1137
10'-6" x 96"	836	964	918	1258
12'-6" x 96"	984	1137	1076	1563
14'-6" x 96"	1168	1346	1280	1951
15'-6" x 96"	1301	1489	1418	2087
16'-6" x 96"	1433	1637	1561	2224
18'-6" x 96"	1576	1724	1729	2333
20'-6" x 96"	1744	1816	1902	2766
22'-6" x 96"	1999	2090	2183	3110
24'-6" x 96" **	2270	2310	2356	3390
26'-6" x 96" **	2524	2496	2601	3560

Super Duty Dimensions and Weights\*

Platform Length & Width	Wood	Smooth Steel	Tread-plate 1/8"
8'-6" x 82"	-	-	-
8'-6" x 96"	-	-	-
9'-6" x 82"	-	-	-
9'-6" x 96"	-	-	-
10'-6" x 96"	1270	1480	1451
12'-6" x 96"	1510	1762	1728
14'-6" x 96"	1750	2044	2005
15'-6" x 96"	-	-	-
16'-6" x 96"	1990	2326	2281
18'-6" x 96"	2230	2608	2378
20'-6" x 96"	2470	2890	2834
22'-6" x 96"	2710	3170	3110
24'-6" x 96" **	2955	3460	3392
26'-6" x 96" **	3210	3750	3674

Patriot Dimensions and Weights\*

Platform Length & Width	Smooth Steel 10 GA	Smooth Steel 7 GA
9' x 96"	814	1026
10' x 96"	906	1139
12' x 96"	1060	1367
14' x 96"	1215	1595
16' x 96"	1447	1823
18'-6" x 96"	1773	2138
20'-6" x 96"	1963	2369
22'-6" x 96"	2152	2599
24'-6" x 96" **	2312	2733

### Steel Stake Racks

Steel stake racks are available in 28 and 40-inch heights. Heavily corrugated roll formed 16 gauge slats are welded to 13-gauge hat section roll formed stakes for outstanding strength and durability. The slats feature hemmed edges and rounded corners for safer handling. Sure-close spring tension rack connectors and rack hold downs keep the stake racks solidly in place yet allow for easy one-person removal. Painted with a high gloss black acrylic electrocoat topcoat.

Optional swing-out rear rack sections available that will save you time and effort when loading and unloading.



### Solid Steel Stake and Contractor Sides

Solid steel stake sides for Heavy Duty Platforms are available in 40-inch and 52-inch heights with two section full opening Econo-Rear doors. The front and sides are constructed from 14-gauge steel. Front and side sections are also reinforced with 13-gauge hat section stakes on 24-inch centers. Solid sides are ideal for confined cargo or bulk hauling. Painted with a high gloss black acrylic electrocoat topcoat.



### Landscaper and Grain sides

The Grain and Landscaper Bodies are designed and ruggedly built for durability, strength, convenience and finish painted with an exclusive high gloss black acrylic electrocoat topcoat for maximum rust resistance. With 10, 12, and 14 GA sides and rear gate (model specific), these bodies are built heavier than any other body on the market and can handle virtually any cargo. The smooth sides allow dumping of all types of material without hangups on any ridges or breaks.

Sides are available in 40" or 52" heights.



### Bulkhead (bolt and weld-on applications)

Formed one-piece 12-GA skin sheet with punched hole window (chassis specific) and corrugated construction for added durability and appearance. Painted with a high gloss black acrylic electrocoat topcoat. Installation hardware and applicable welding instructions included.

Options include: Cab shield

No window opening



Super duty weld-on



Heavy duty drop-in

# Badger bodies

## All-purpose steel and aluminum truck bodies

Omaha Standard Palfinger has engineered and built the toughest all-purpose body on the market. The "Badger" is ideal for gooseneck hauling and rugged enough to withstand heavy day-in and day-out use. These attractive bodies offer you the best value available today for light and medium duty work trucks. The attractive all aluminum "Badger" bodies are lightweight yet rugged enough to withstand your demanding day-in and day-out use. Designed for 1/2, 3/4 or 1-ton chassis, rust-proof construction, minimal maintenance, increased fuel mileage, ideal for gooseneck hauling.



Body shown with Optional 14" Contractor Racks and work lights



Optional above body and underbody toolboxes shown.

### Steel Badger features:

- 3-yr./36,000 mile limited warranty.
- 1/8" thick treadplate steel floor and full depth reinforced rear apron with tree-light cluster and corner lights.
- 4" structural channel long members (6" optional).
- 4-3/16" 12-gauge high strength steel channel cross members.
- Heavy-duty 1/4" x 2" banding rail to secure cargo
- FMVSS compliant clearance lights and reflectors. Wiring in loom harness.
- Heavy-duty rectangular contoured tube single sheet bulkhead is welded to platform. Stylish laser profiled window is standard.
- Center high mounted stop light (CHMSL).
- Stake pockets accommodate 2 x 4 lumber.
- Painted with a high gloss black acrylic electrocoat topcoat over a zinc phosphate precoat for maximum durability and rust resistance.

Model	Length	Width	C.A.	Weight*
B8N	8' - 2"	82"	54" - 60"	737
B8W	8' - 2"	96"	60"	855
B9N	9'	82"	60"	784
B9W	9'	96"	60"	908
B10W	10'	96"	84"	973
B11W	11'	96"	84"	1057
B12W	12'	96"	84"	1189
B14W	14'	96"	108"	1288
B16W	16'	96"	120"	1438

### Aluminum Badger features:

- 3-yr./36,000 mile limited warranty.
- 1/8" (.125) thick treadbrite floor, side rails, and reinforced rear apron.
- 3" channel crossmembers.
- 4" channel long members (6" optional) gusseted to crossmembers.
- Heavy-duty tapered bulkhead welded and gusseted to platform.
- Stake pockets on side rails sized to accept 2x4 boards.
- 1/4" x 2" banding rails to secure cargo.
- FMVSS compliant reflectorized corner clearance lights, 3-light cluster (I.D. lights) and tail, turn, stop and backup lights.
- Light wiring in loom harness.

Model	Length	Width	C.A.	Weight*
AB8N	8'	82"	54" - 60"	340
AB8W	8'	96"	60"	360
AB9N	9'	82"	60"	440
AB9W	9'	96"	60"	459
AB10W	10'	96"	84"	510
AB11W	11'	96"	84"	561
AB12W	12'	96"	84"	612

# General Bodies

## The low profile, all-purpose bodies

**PALFINGER**

Omaha Standard PALFINGER General body is the right choice for a wide range of applications. It's ideal for the hauling needs of contractors, electricians, roofers, plumbers, concrete finishers and lawn irrigation companies to name just a few. The General is specifically designed for single or dual-wheel chassis and the low profile gives the driver an unobstructed view to the rear making it perfect for towing operations, including gooseneck and fifth-wheel trailers. The General's wide floor is ideal for hauling all types of loads: drywall, pipes, scaffolding, etc. Options such as ladder racks and a full-length, underbody, "possum belly" storage compartment are available.

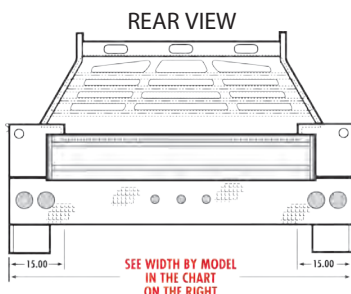
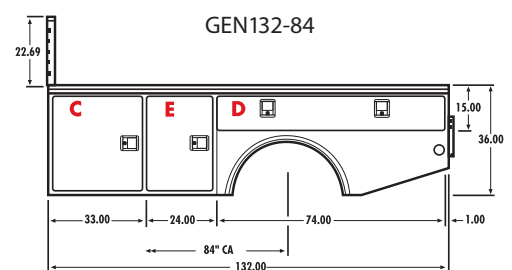
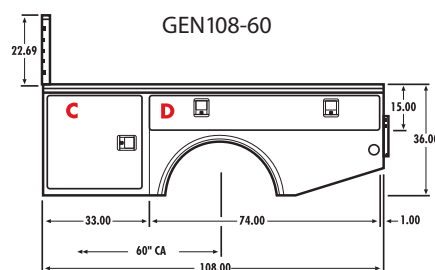
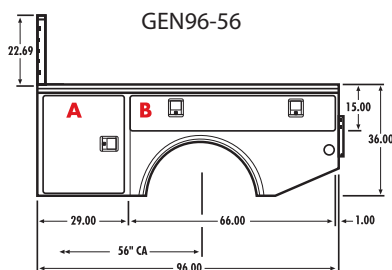


### Body and Bulkhead

- 3-yr./36,000 mile limited warranty.
- 4" structural channel long members (6" optional).
- 4-3/16" heavy channel cross members.
- 1/8" treadplate steel floor and reinforced rear apron.
- Heavy-duty, contoured rectangular tube, single piece bulkhead. Stylish laser-profiled window is standard.
- Attractive, automotive-style steel fender skirt.
- Body is completely electrocoated with a light gray epoxy e-coat primer for maximum durability and rust resistance.
- Stainless steel rotary latch pickup style slam tailgate.
- FMVSS compliant clearance lights and reflectors.
- Wiring in loom harness.

### Storage Compartments

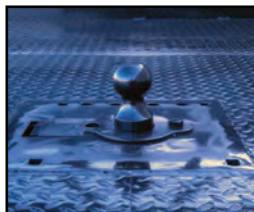
- Four large capacity storage compartments on the 96" and 108" models; six compartments on the 132".
- All A-60 two-sided galvanized steel construction.
- Double-panel doors with rigid, steel stiffeners bonded between panels for maximum strength.
- Exclusive all stainless steel interior mounted door hinges for greater security and ease of replacement.
- Spring-loaded over-center door retainers on all full size vertical doors.
- Stainless steel automotive rotary paddle latches combined with adjustable striker for positive door closure.
- Door latches are bolted, not welded or riveted.
- Full perimeter uninterrupted automotive neoprene bulb door seals.



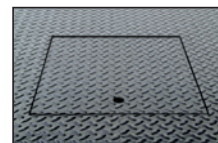
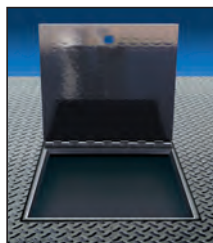
Clear Door Openings	
A	23-3/4" W x 30" H
B	63-3/4" W x 10" H
C	27-3/4" W x 30" H
D	71-3/4" W x 10" H
E	19-3/4" W x 30" H

Model	Length	Width	C.A.	Weight*	Application
GEN 96-56SW	8'	78"	56"	1136	Single Wheel
GEN 96-56DW	8'	96"	56"	1196	Dual Wheel
GEN 108-60SW	9'	78"	60"	1278	Single Wheel
GEN 108-60DW	9'	96"	60"	1364	Dual Wheel
GEN 132-84DW	11'	96"	84"	1693	Dual Wheel

### Optional equipment available for Badger and General Bodies



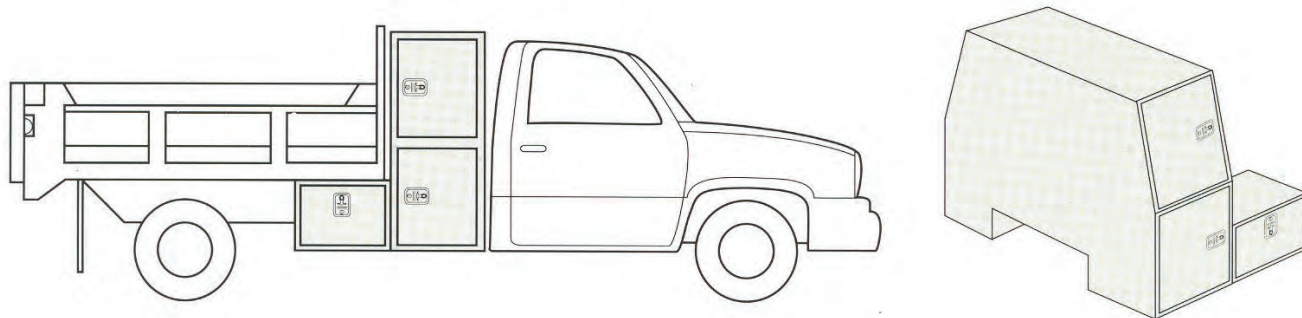
Retractable ball hitch for quick hook ups.



Gooseneck style hinged door, flush mounted. 8" structural channel drawbar included.

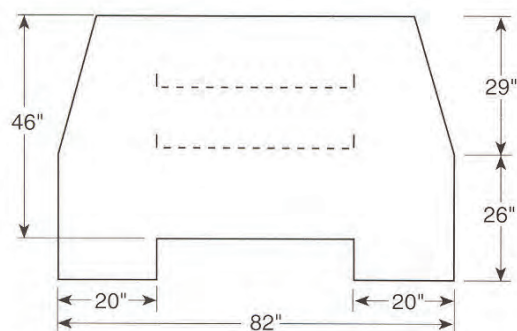
# Backmate

The Omaha Standard PALFINGER Backmate adds versatile, safe storage to your truck and does not interfere with normal truck operations such as dumping, loading and hauling. Available in both "I" and "L" configurations, the Backmate features two shelves in the main compartment with easy access from either side.



## Backmate features

- 3-yr./36,000 mile limited warranty.
- 20 GA galvanized steel double-panel doors with rigid interior metal stiffeners bonded between the panels for maximum strength and the elimination of weld marks.
- Stainless steel door hinges are bolted on for ease of replacement and interior mounted at top, bottom, and middle of hinge for greater security.
- Zinc-coated adjustable striker posts.
- Door channels and full-perimeter uninterrupted flange-mounted automotive neoprene bulb-type door seals provide weatherproof integrity.
- Spring-loaded, over-center door retainers on all vertical doors.
- Cable retainers on horizontal doors.
- Also available: flat bottom Backmate to fit foreign chassis.
- E-coat protected



Rear View

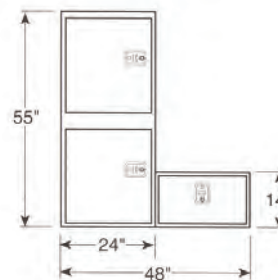
Side View "I" Configuration



"I" Backmate

Model	Part Number	Length	Height	Depth	Weight*
BM-I	34-30101P	24"	55"	82"	456

Side View "L" Configuration



"L" Backmate

Model	Part Number	Length	Height	Depth	Weight*
BM-L	34-30111P	48"	55"	82"	538

# Underbody Toolbox



Built for strength, durability, and corrosion resistance from all A-60 two-sided zinc coated galvanized steel. To keep the interior compartment dry and weather resistant, we've added a drip rail and a full perimeter automotive neoprene bulb door seal. The all stainless steel key lockable automotive rotary paddle latches make these toolboxes a secure, convenient place to store tarps, flares, tools, chains, etc.



## Compartment Construction

- Heavy 14 GA A-60 two-sided galvanized steel fully welded steel construction.
- Full length drip molding.

## Toolbox Options

- Mounting brackets for attaching toolbox to truck.
- Divider tray kits with adjustable dividers and mounting hardware.
- Custom sizes available.

Technical specifications						
Model	Length	Height	Depth	Clear Door Openings	Weight*	Capacity
U-24	24"	20"	18"	19-3/8" x 15-3/8"	76	4.5 cu ft
U-30	30"	20"	18"	25-3/8" x 15-3/8"	92	5.6 cu ft
U-36	36"	20"	18"	31-3/8" x 15-3/8"	106	6.8 cu ft
U-48	48"	20"	18"	43-3/8" x 15-3/8"	134	9.0 cu ft
U-60	60"	20"	18"	55-3/8" x 15-3/8"	164	11.2 cu ft

## Door Construction

- Double panel doors with interior steel "C" channel stiffener bonded to panels with structural adhesive to eliminate welds.
- Full perimeter structural adhesive bonded automotive neoprene bulb door seals with no break at latch for full weatherproof integrity.
- Double panel door perimeter is fully bonded with a high strength epoxy adhesive to eliminate weld marks.
- All stainless steel automotive rotary paddle latch. Bolted to inside of door for ease of replacement.
- Door channel design diverts water away from door opening to help keep compartment dry.
- Full length all stainless steel hinge with concealed hinge leaves and 1/4" stainless steel pin.
- Cable door retainers (one per door on 24" & 30", two per door on 36", 48" & 60" lengths).
- Door hinges are interior bolted to door frame for security and ease of replacement.
- Adjustable door latch striker pin.



## Manufacturing



From the company's beginning in the 1920's through the 1960's, Omaha Body Company made a variety of products including: spark plugs, aircraft components, later transitioning to center dump gravel trailers, delivery vans, moving vans, dump bodies, flatbed trailers, and farm bodies.

In 2006 all production was centralized in a state-of-the-art 210,000 sq. ft. facility, including an in-house e-coat system.

Omaha Standard was acquired by PALFINGER AG October 31, 2008. After the acquisition by PALFINGER AG, OSP introduced a

complete line of mechanics service bodies, telescopic cranes and hydraulically driven air compressors.

Omaha Standard PALFINGER is a proud member of the PALFINGER North America Group.

## 12 step paint process provides the ultimate rust resistance & is environmentally friendly!



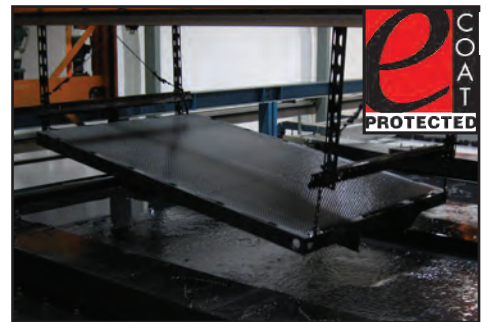
Cleaned and pretreated with a phosphate conversion coating to prepare the product for electrocoating.

Dipped into a paint bath where direct current is applied between the products and a counter electrode. Paint is attracted by the electric field to the product and is deposited onto the product.



Removed from the bath and rinsed to reclaim undeposited paint solids.

E-coat is environmentally-friendly, recyclable, and economical with the paint applied to a precise thickness over the entire product so no paint is wasted. Then transferred to the bake oven and completely cured at a temperature of 375°.



Omaha Standard PALFINGER E-coat completely covers the products to make them durable and corrosion resistant.

"Green" initiatives are encompassed in all aspects of PALFINGER North America Group company activities, from manufacturing, procurement, including new product development.

